

The Studios of Key West Sculpture Garden



Southard St. Gate

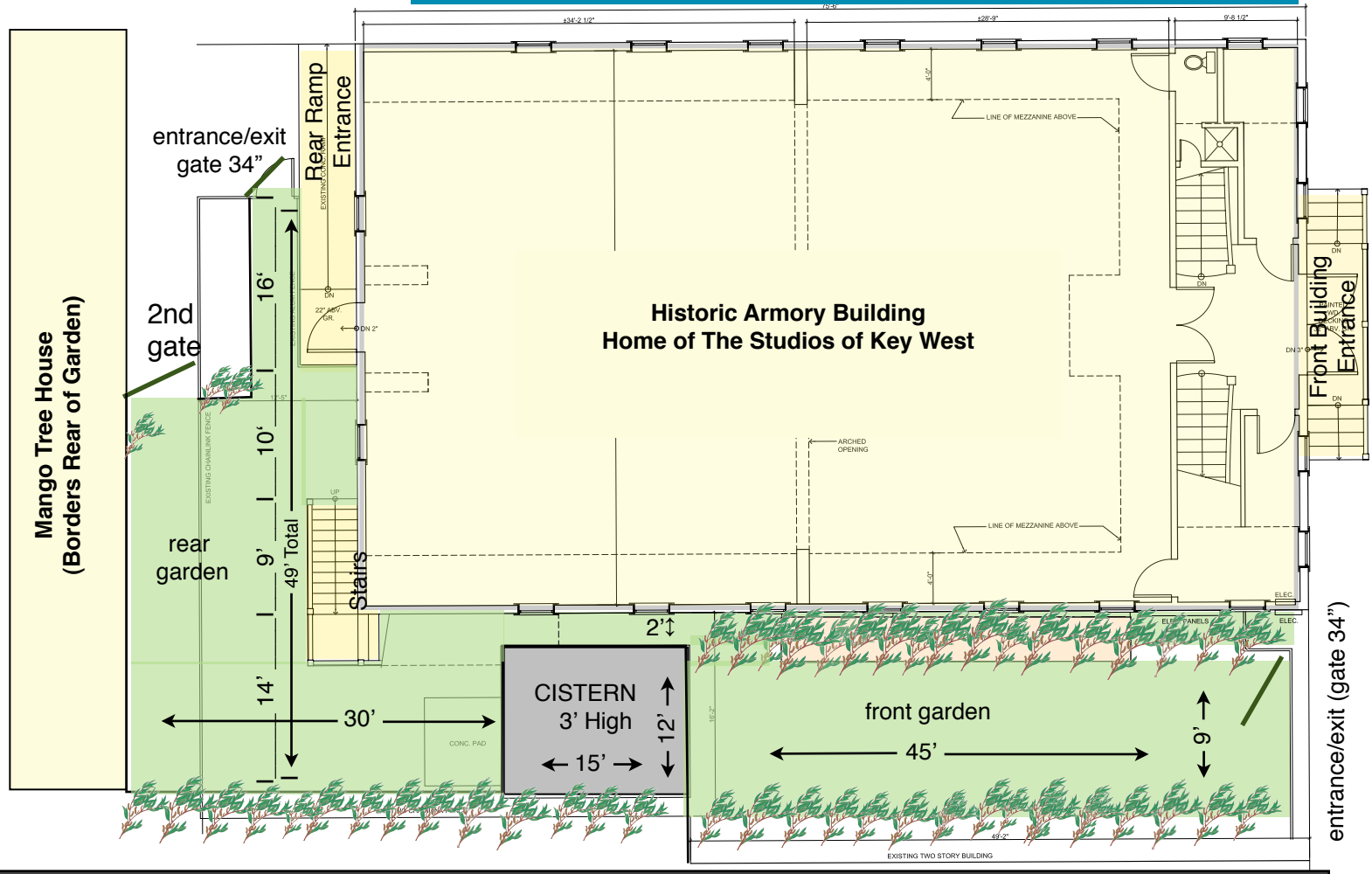


corner from just inside Southard St



Rear garden view from cistern (mango tree house in foreground)

Southard Street



White Street

entrance/exit (gate 34")

EXISTING FIRST FLOOR PLAN
SCALE: 1/4"=1'-0"



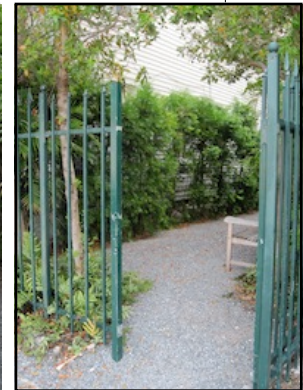
Narrow connecting path, right side of cistern



Looking back at White St entrance, from cistern



Front Garden from St.



White St. Gate